

Eureka Solutions

A decorative graphic consisting of a blue background with a white curved shape on the left. A series of orange and blue dots form a wave-like pattern that recedes into the distance.

Sage 200 Data Exchange Data Sheet

Introduction

The Sage 200 Data Exchange module provides an out of the box solution enabling integration between Sage 200 and 3rd party applications.

Many businesses that use Sage 200 have requirements for integration with other systems. The following few examples are typical scenarios:

- **Web trading** – making stock information including descriptions, pricing and pictures available on a website, and receiving sales order information.
- **Bespoke stock management systems** – companies using industry specific systems to handle stock and order processing where stock movements need to also be accounted for in Sage 200.
- **EPOS systems** – companies using an EPOS system other than Sage POS where sales order and cash transactions need to be posted to Sage 200.
- **Global enterprises** – where different parts of an organisation use different accounting/business management solutions and require customers, suppliers and various transaction types to be synchronised between systems.

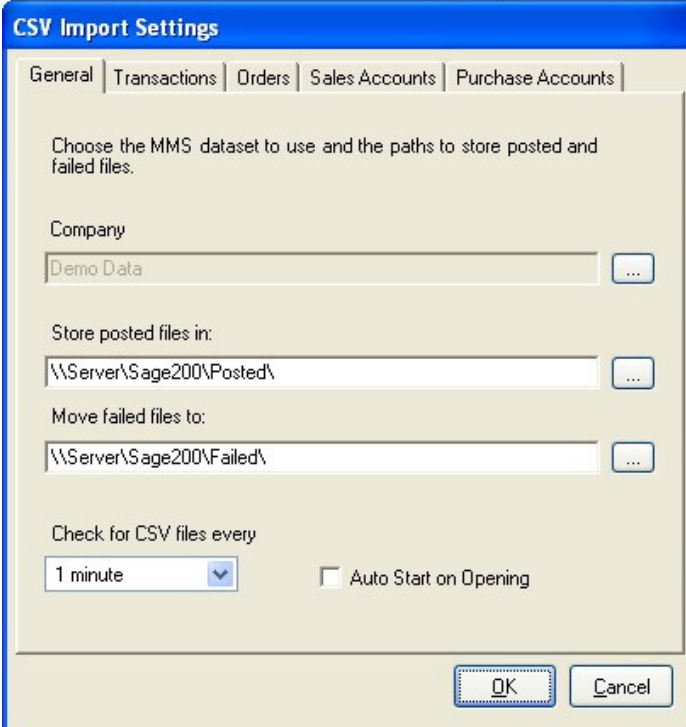
In the above situations, the typical solution is to write complex and very costly data transfer routines to handle movement between different database types. Often this can result in large administrative overheads in transferring the data, and discrepancies occurring between systems as a result.

Sage 200 Data Exchange has been designed to account for these scenarios and many more.

Summary of Data Exchange Features

- **Easy to install & configure** - easy to follow install wizard and simple configuration options.
- **Automated standard import routines** – Data Exchange allows for the standard Sage 200 import routines to become automated, cutting down on the amount of time spent by users transferring data manually.
- **Additional import routines** – As well as automating the standard import routines, Data Exchange also allows for **Sales Orders, Purchase Orders** and **Cashbook** transactions to be imported.
- **CSV & XML formats supported** – data can be transferred in and out of Sage 200 in either CSV or XML formats, allowing for more flexible integration with different database types.
- **FTP compatible** – Upload Sage 200 data to designated locations on an FTP site, particularly useful for web integration.
- **Further customisation potential** – If additional import/export routines are required, we can write these for you.

Configuring Data Exchange



CSV Import Settings

General | Transactions | Orders | Sales Accounts | Purchase Accounts

Choose the MMS dataset to use and the paths to store posted and failed files.

Company
Demo Data ...

Store posted files in:
\\Server\Sage200\Posted\ ...

Move failed files to:
\\Server\Sage200\Failed\ ...

Check for CSV files every
1 minute ▾ Auto Start on Opening

OK Cancel

Easy to install

Data Exchange can be installed on any pc which has the Sage 200 client software installed.

Easy to set up

A series of easy to configure settings are then applied which allow you to specify how often the program should check for new files, which Sage 200 database is being used and all the relevant locations where files are to be transferred from and to.

The following records and transactions can be automated:

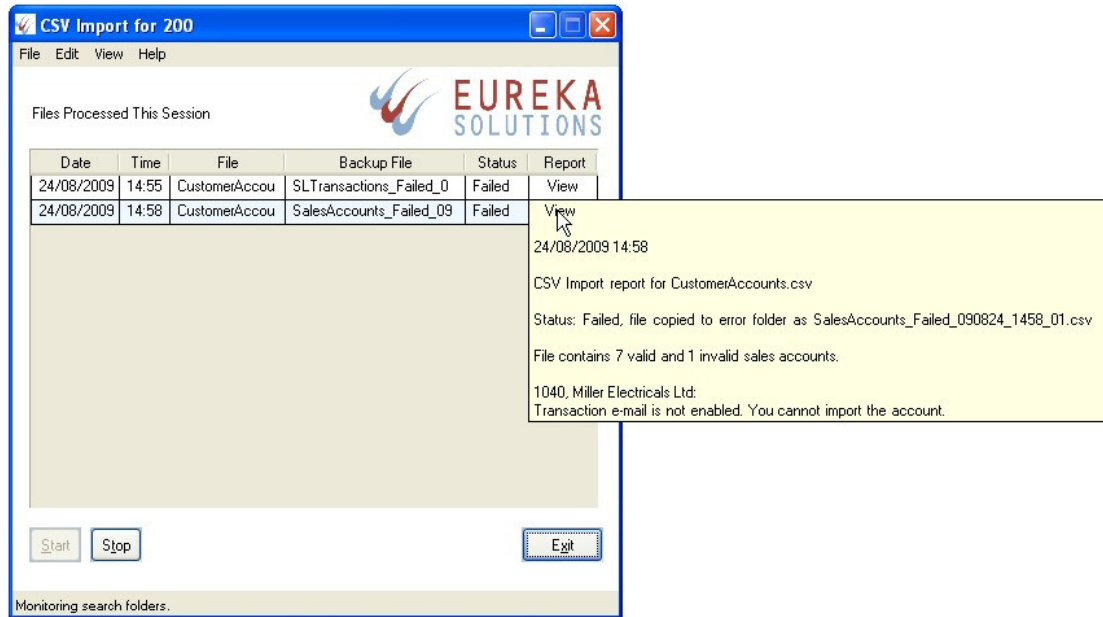
Import into Sage 200

- Sales & Purchase Ledger Records
- Stock Records
- Sales & Purchase Ledger Transactions
- Nominal Transactions
- Cashbook Transactions
- Stock Transactions (Add Stock & Write Off Stock)
- Sales Orders
- Purchase Orders

Export out of Sage 200

- Sales & Purchase Ledger Records
- Stock Records

Running Data Exchange



Easy to use

Once the settings have been assigned, the program can either be set to start up automatically or opened on demand. It then waits for files to appear in the relevant file locations and attempts to process them.

Only valid files will be posted. If validation fails for any reason, the file will be rejected and moved to a specific location in order for you to check it. Whether a file post successfully or not, a detailed report is generated which can be reviewed at any time.

File Formats

For details on any of the CSV or XML file formats, or for sample files, please email us at development@eurekasolutions.co.uk.

Additional Development

Should you require any additional import or export routines to be created, or require any functionality that does not come as standard in the Data Exchange module, we would be happy to talk to you. Please see the following page for contact information.

Contact Us

Eureka Solutions have worked successfully with many Sage 200 customers over the past 5 years. In addition to Data Exchange and other modules we have written, we are happy to engage in bespoke/customisation work.

To download a 30 day trial of Sage 200 Data Exchange and for all up to date information and details of our modules, please refer to our website www.eurekaaddons.co.uk.

If you wish to discuss a specific project or pricing, please call Alistair Livingstone on 07887 547642 or 01355 581 960. Alternatively please email development@eurekasolutions.co.uk.